

FORT DUNCAN MEDICAL CENTER

Eagle Pass, Texas



Client Project

With patient volume rising dramatically, **Fort Duncan Medical Center** had to find a way to expand their radiology capabilities and facilities to keep up with the increasing influx of patients.

Client Need

Fort Duncan needed a new facility up and running on an accelerated schedule, which created enormous challenges. The nature of radiology alone created its own demands. Demands for a structure that would allow moving and installation of massive equipment and that would include lead radiation shielding. The facility would have to support the weight of equipment and shielding, and handle the tremendous electrical power needs. **Fort Duncan** wanted a construction solution that was efficient, fast, and dependable.



SPACE BY

WILLIAMS

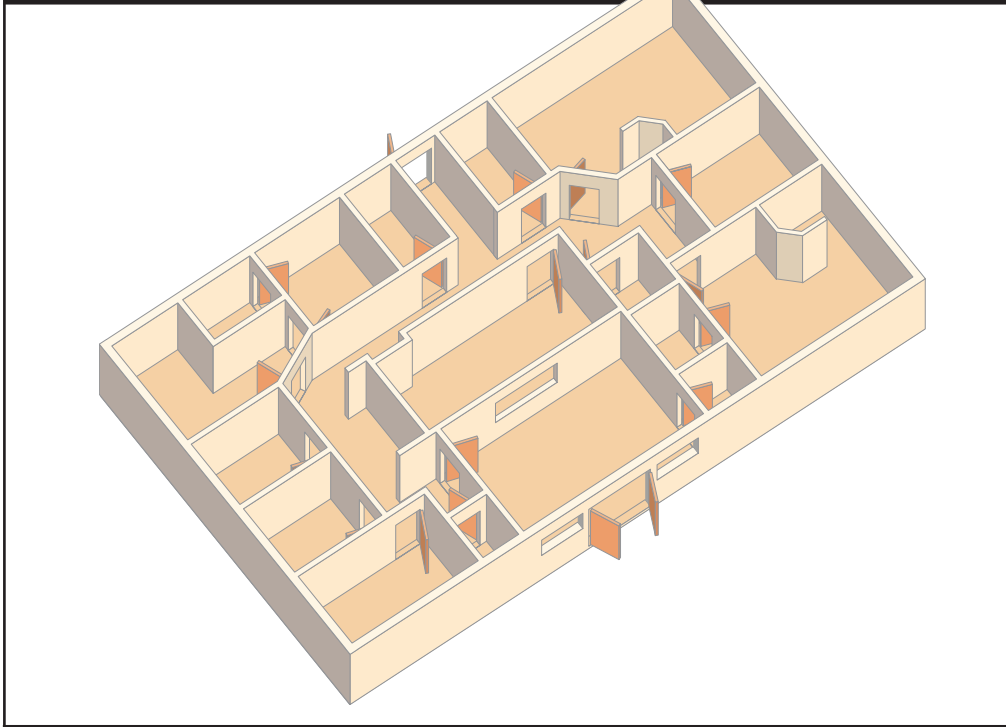
SCOTSMAN

800.782.1500

www.willscot.com

FORT DUNCAN MEDICAL CENTER

Eagle Pass, Texas



The Williams Scotsman Solution

Williams Scotsman offered **Fort Duncan** a fully customized, 2,660 sq. ft. modular space solution that met all of their needs. The first customization was an 8' x 8' removable wall to allow for the installation of the equipment. The lead-lined walls added to the weight, and **Williams Scotsman's** expert team calculated the needs and poured two concrete pedestals in the foundation to provide the necessary support. They also arranged for extensive on-site electrical wiring to meet the demands of the equipment. The building's interior was composed of vinyl gypsum walls, carpeted and vinyl tile flooring, an acoustical ceiling and fluorescent lighting. Lighted exit signs and handicapped accessible bathrooms were installed to meet both the hospital staff's and patients' needs. Most importantly, **Williams Scotsman** delivered the space on the hospital's tight schedule.

The Result

The new radiology lab was the fourth Williams Scotsman building on **Fort Duncan's** grounds. Previously, **Williams Scotsman** constructed a clinic for hyper-baric medicine, classrooms to help meet an urgent need for trained nursing professionals, and new office space for the hospital's anesthesiology team. All of the buildings are a true extension of the main hospital. They are attractive additions to the campus. "Our staff and patients are very pleased with **Williams Scotsman**. They were prompt, efficient, and provided excellent service."

Jorge Beattie, Plant Manager

WILLIAMS
SCOTSMAN

CONTRACT AWARDED

1-97

SUBMISSION & APPROVAL
OF DRAWINGS

2-97

SITE PREPARATION

3-97

DELIVERY & INSTALLATION

4-97

SPACE BY

WILLIAMS

SCOTSMAN

800.782.1500

www.willscot.com