

SIEMENS WESTINGHOUSE

Monroeville, Pennsylvania



Client Project

Siemens Westinghouse was experiencing extreme demand of its expanding product line. In order to meet demand, they needed to increase the number of employees; therefore they were in need of additional office space. Construction work was to begin immediately mandating relocation to avoid business disruption as a result of dust and debris.

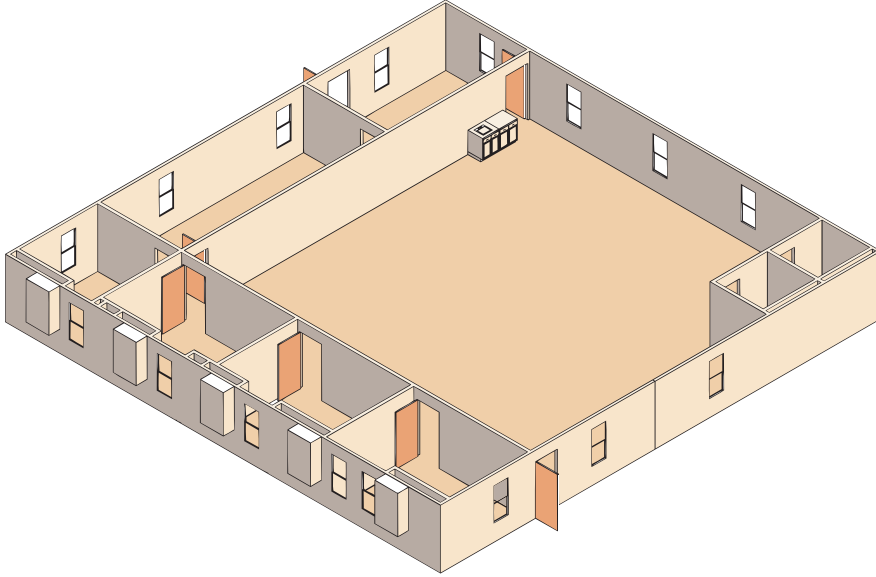
Client Need

Siemens Westinghouse needed a temporary building that could accommodate their staff during the building expansion. Their need was immediate, making a modular building the most feasible option. It was critical that they sustain their productivity throughout the process. Therefore, a temporary on-site building was necessary to keep the staff centralized and avoid any disruption in business during the planning and building of the permanent facility. As a previous customer, **Siemens Westinghouse** was confident with **Williams Scotsman's** ability to provide the appropriate space solution.



SIEMENS WESTINGHOUSE

Monroeville, Pennsylvania



The Williams Scotsman Solution

Williams Scotsman provided a five section, Redi-Plex Building totaling 3,600 square feet.

It was installed in two weeks using turn-key construction. The building maintained all the efficiencies of their former space. It included a resource room, conference room, restrooms, four offices, cubicles and a large meeting area. The interior was enhanced by the construction and installation of custom cabinetry. The 60' clear span roof trusses on each building offered optimal flexibility for space planning, by eliminating the need for support columns. This design feature allowed an additional private office to be configured after the initial project completion. The exterior of the building was finished with custom-built decking and ramps.

The Result

"Dealing with the people at Williams Scotsman was a positive experience; they were very responsive to our needs." Ed Gollinger, Siemens Westinghouse.

WILLIAMS SCOTSMAN

ORDER RECEIVED

11-01-00

DELIVERY

11-01-01 to 11-17-01

INSTALLATION

1-22-01 to 2-19-01

OCCUPANCY

2-19-01

SPACE BY

WILLIAMS

SCOTSMAN

800.782.1500

www.willscot.com